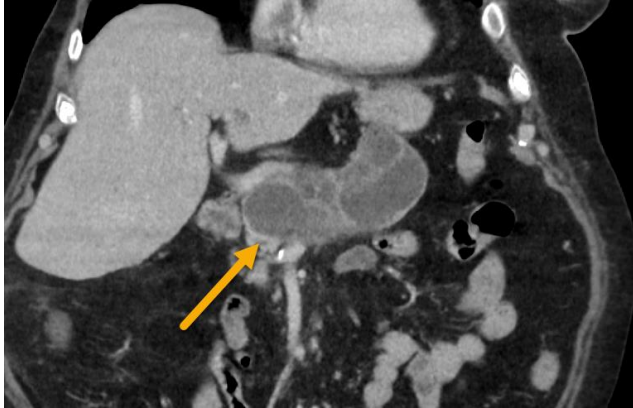


Clinical Context:

78 yo, abdominal CT scan with incidental finding of pronounced dilatation of the pancreatic duct with parenchymal atrophy of unclear origin. Asymptomatic patient.



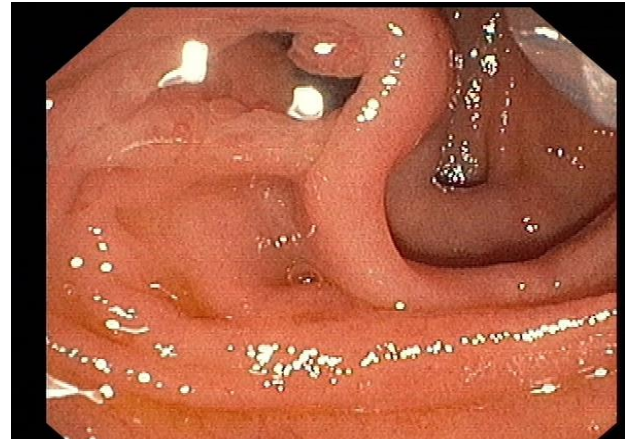
Atrophic pancreatic parenchyma with dilated pancreas main duct



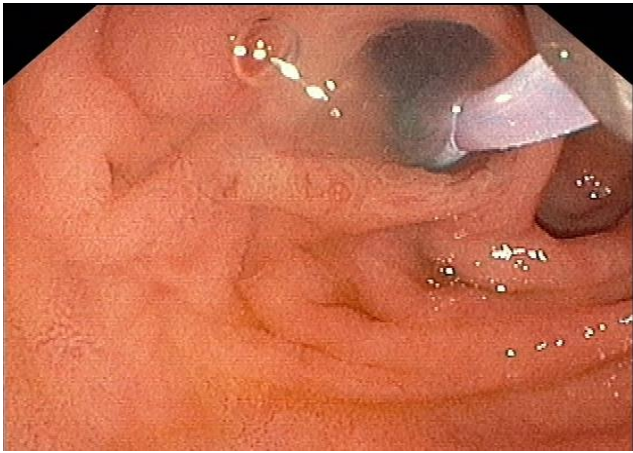
Suspected IPMN of pancreatic main duct



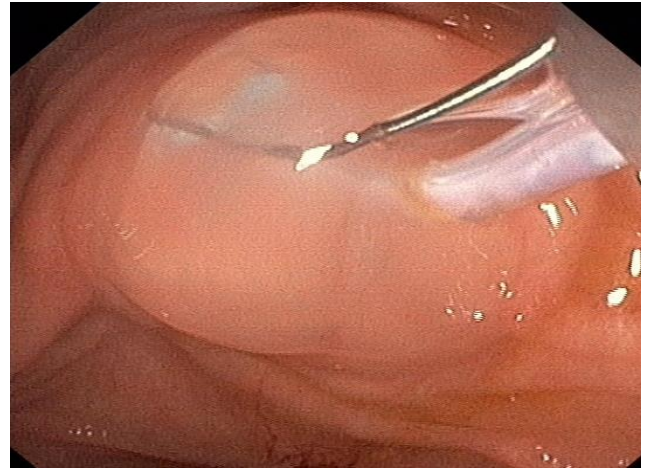
Dilated ampulla of Vater



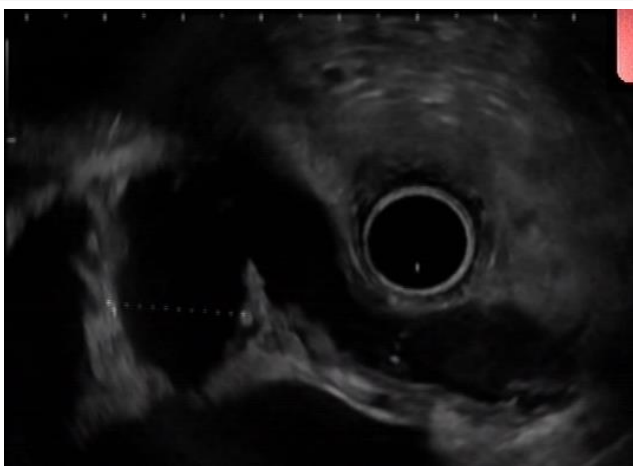
Dilated ampulla of Vater



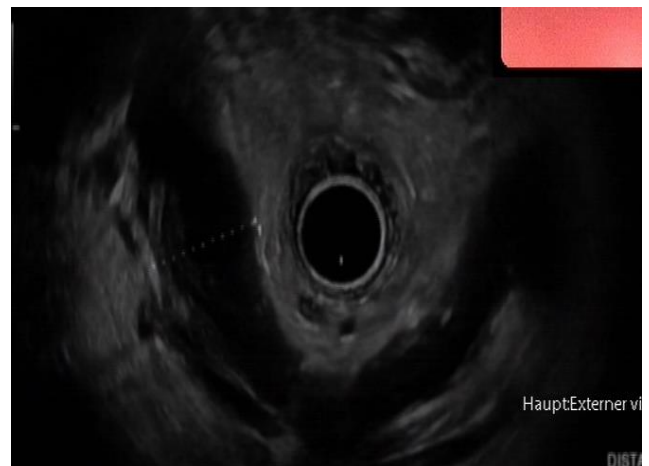
**Fish-Eye ampulla**



Fish-Eye ampulla with overflow of sticky and serous liquid



EUS : Dilated duct of Wirsung (17mm)



**Histology (Aspirate, duct of Wirsung): IPMN**

**TAKE HOME MESSAGE :**

**Fish-Eye Ampulla is a rare pathognomonic sign for IPMN of the pancreas**